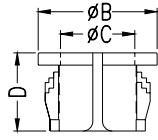


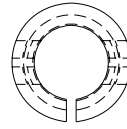
# Adjustment Part - SNAP BUSHING

Hankook Fastener

- ◆ MATERIAL: NYLON 66(UL)
- ◆ FLAME CLASS :94V-2
- ◆ COLOR: BLACK
- ◆ UNIT: mm
- ◆ 採開口式量法

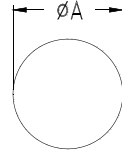


THICKNESS 0.8~3.3

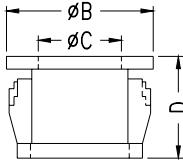
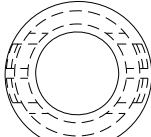


MOUNTING HOLE

0.1  
0.05

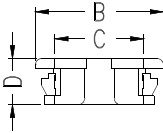
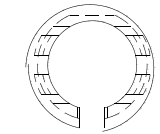


MOUNTING HOLE

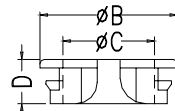
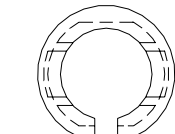


PART NO	A	B	C	D	PACKAGE
0813C	12.7	15.0	9.7	9.8	1000
1216C	15.9	18.4	12.8	10.4	
1419C	19.0	20.7	15.1		

PART NO	A	B	C	D	CHASSIS THICKNESS	PACKAGE
312-3	8.0	9.5	5.2	8.2	0.8~1.8	1000
375-4	9.5	12.0	6.6	10.3	0.8~3.3	
0811	11.1	13.5	8.3			
0813	13.0	15.1	9.8			
1216	16.0	18.2	12.8			



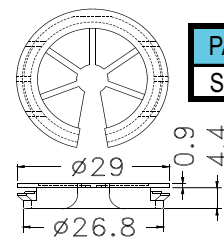
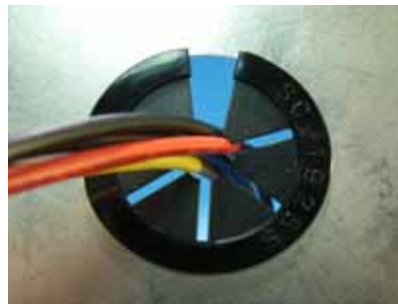
PART NO	A	B	C	D	CHASSIS THICKNESS	PACKAGE
NB-1419	19.0	21.5	14.3	11.3	0.8~3.3	200
NB-1722	22.2	25.1	18.6	11.2		100
NB-1925	25.4	27.8	19.4	10.8		200
NB-2430	30.1	34.0	24.5	11.7		
NB-2535	35.0	37.8	25.8	11.3	0.8~3.5	



THICKNESS 0.8~1.4

PART NO	A	B	C	D	CHASSIS THICKNESS	PACKAGE
NB-09	9.5	12.4	7.6	6.0	0.8~1.6	1000
NB-12	12.7	16.8	10.8	7.3		500
NB-16	15.9	20.3	14.1			
NB-19	19.0	22.5	16.5			
NB-22	22.0	26.0	20.0			
NB-25	25.4	28.6	22.0			

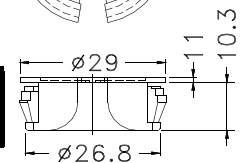
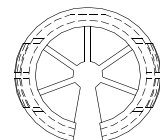
PART NO	A	B	C	D	PACKAGE		
NB-07A	7.0	10.4	6.0	4.8	1000		
NB-12A	12.7	16.2	10.8	5.2			
NB-16A	16.0	19.3	13.0	5.5	500		
NB-19A	19.0	22.9	15.6				
NB-21A	21.0	25.0	19.0				
NB-22A	22.0	25.8	19.3				
NB-23A	23.0	26.4	20.4				
NB-24A	24.0	27.0	20.8				
NB-27A	27.0	34.6	23.0			6.0	250
NB-29A	29.0	34.0	26.3			7.0	500



CHASSIS  $\phi 25.4$   
THICKNESS 0.8~1.0

PART NO	PACKAGE
SC-1925S	250

PART NO	PACKAGE
SC-1925A	250



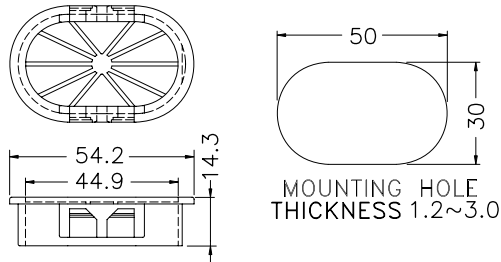
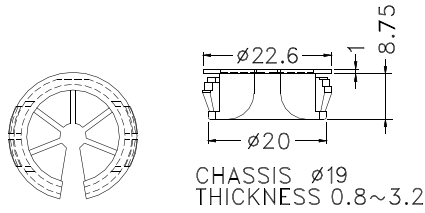
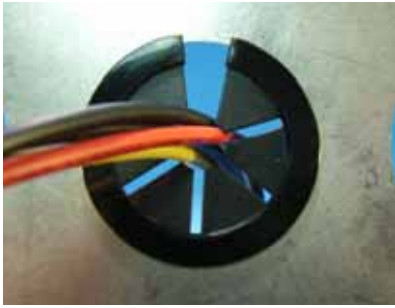
CHASSIS  $\phi 25.4$   
THICKNESS 0.8~3.0

# Adjustment Part - SNAP BUSHING

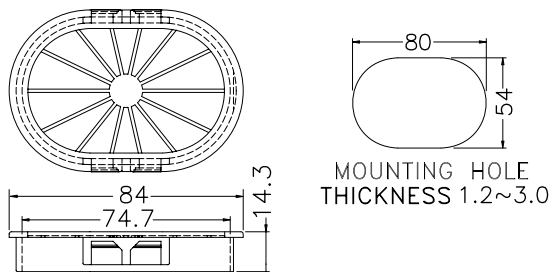
Hankook Fastener

- ◆ MATERIAL: NYLON 66(UL)
- ◆ FLAME CLASS :94V-2
- ◆ COLOR:BLACK
- ◆ UNIT:mm
- ◆ 採開口式量法

PART NO	PACKAGE
SC-1319A	500



PART NO	PACKAGE
NBR-5030	100

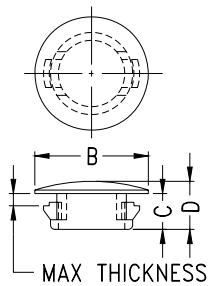


PART NO	PACKAGE
NBR-8054	50

# Adjustment Part - HOLE PLUG

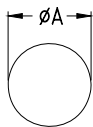
Hankook Fastener

- ◆ MATERIAL: NYLON 66(UL)
- ◆ FLAME CLASS :94V-2
- ◆ COLOR:BLACK
- ◆ UNIT:mm
- ◆ 採開口式量法

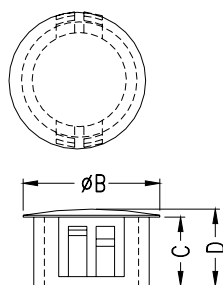


PART NO	A	B	C	D	THICKNESS	PACKAGE
M04	4.8	6.35	4.5	5.5	1.6	2000
M06	6.4	7.6		5.6		
M09S	9.5	13.0	4.1	5.5	1.4	1000
★M13.5	13.5	15.2	5.0	6.2	2.2	500
M16S	15.9	20.0	6.5	7.7	2.0	

0.1  
0.1



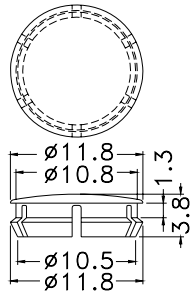
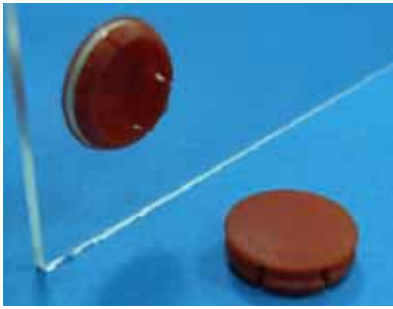
MOUNTING HOLE



PART NO	A	B	C	D	THICKNESS	PACKAGE
M08	8.0	9.5	6.4	7.6	1.6	1000
M09A	9.0	11.5	8.6	10.1	3.3	
M09	9.5	11.9				
M13	12.7	14.6	9.0	10.6		500
M16	16.0	18.7	9.3	10.3		
M19	19.0	23.2	8.7	11.0		200
M22	22.2	25.4	9.9	11.0		
M25	25.4	28.4	9.6	11.3	100	
M30	30.0	34.2	10.0	11.3		

# Adjustment Part - HOLE PLUG

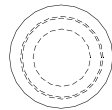
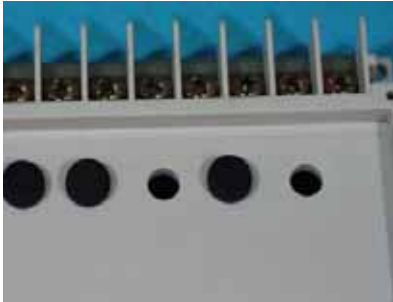
Hankook Fastener



MOUNTING HOLE  $\phi 11$

- ◆ MATERIAL: NYLON 66(UL)
- ◆ FLAME CLASS: 94V-2
- ◆ COLOR: BLACK
- ◆ UNIT: mm

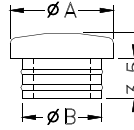
PART NO	PACKAGE
MHE-11	1000



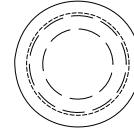
- ◆ MATERIAL: T.P.E
- ◆ COLOR: BLACK
- ◆ UNIT: mm



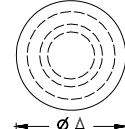
MOUNTING HOLE



- ◆ MATERIAL: SILICON RUBBER
- ◆ COLOR: BLACK/COMPUTER/BLUE

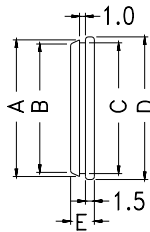
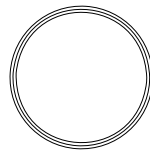


ONLY FOR : MHD-7S

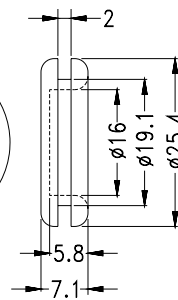
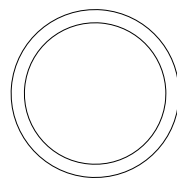


ONLY FOR : MHD-5.5

PART NO	A	B	C	PACKAGE
MHD-5	7.0	5.2	5.0	1000
MHD-5.5		5.6	5.5	
MHD-6	8.0	6.2	6.0	
MHD-7	9.0	7.2	7.0	
★MHD-7S				
MHD-8	10.0	8.2	8.0	



PART NO	A	B	C	D	E	PACKAGE
CDELT-1	23	21.6	22	24	4.0	1000
★CDELT-4	14	12.0	13	16	3.5	

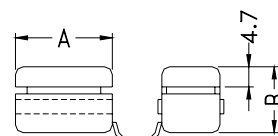
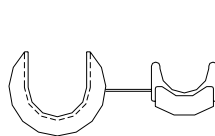


MOUNTING HOLE  $\phi 19$

PART NO	PACKAGE
DGB-19	500

# Adjustment Part - SWITCH POWER BUSHING

Hankook fastener



CHASSIS  $\phi 19$   
THICKNESS 0.8~1.6

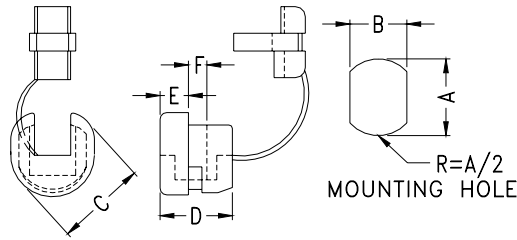
PART NO	WILL FIT THESE CABLE		DIMENSION		PACKAGE
	UL/CSA DESCRIPTION	SIZE	A	B	
SB7R-7	SJT3C#10	14.0~17.0	25.0	17.0	100
SB7R-7SP		12.0~15.2	25.3	17.8	

E-3

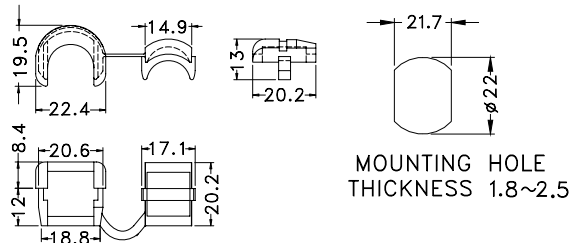
# Adjustment Part - STRAIN RELIEF BUSHING

Hankook Fastener

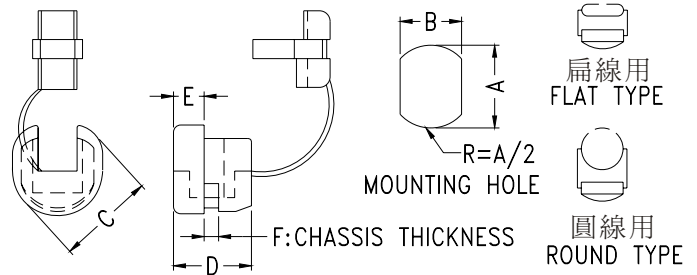
- ◆ MATERIAL: NYLON 66(UL)
- ◆ FLAME CLASS :94V-2
- ◆ COLOR: BLACK
- ◆ UNIT: mm



PART NO	WILL FIT THESE CABLE		CHASSIS DIMENSION		CHASSIS THICKNESS	DIMENSION			PACKAGE
	UL/CSA DESCRIPTION	SIZE	A	B	F	C	D	E	
SB4F-2	SPT-2	4.1X8.6	12.7	11.8	1.8~2.5	14.5	12.4	4.0	500
SB5R-2	SJT3C#16	φ 8.2~9.2		11.5		14.0	11.1	4.5	
SB5F-4	SPT-3	5.0X10.0	14.3	13.4	0.8~1.6	15.4	15.4	6.2	250
SB6R-6	SJT3C#16	φ 8.2~9.2	15.9	14.0		17.7	14.6	5.6	



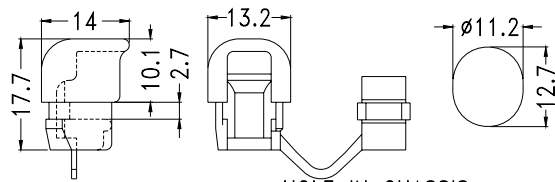
PART NO	PACKAGE
SB8R-2	100



PART NO	WILL FIT THESE CABLE		CHASSIS DIMENSION		CHASSIS THICKNESS	DIMENSION			適用線材 斷面形狀 SECTION SHAPE	PACKAGE
	UL/CSA DESCRIPTION	SIZE	A	B	F	C	D	E		
2P-4	SPT-1	φ 3X5.6	9.9	8.7	0.8~1.6	10.8	10.4	4.0	扁線用 FLAT TYPE	1000
3P-4	SPT-1		11.0	9.9		12.1		3.2		
3W-1	SPT-1		12.5	4.0						
4N-4	SPT-2	φ 3.71X7.6	12.7	11.8	0.8~1.6	13.9	10.5	4.0		
4K-4	SPT-2	φ 3.8X7.6	13.1	11.8	1.9~2.5			5.6		
5N-4	SVT	φ 6.4~7.4	12.7	11.5	0.8~1.6	14.2	10.9	4.2		
5P-4	SVT				1.9~2.5					
6N-4	SJT3C#18	φ 7.6	15.9	14.0	0.8~1.6	17.8	14.8	5.6		
6P-4	SJT3C#18				1.9~3.2				17.6	
6N3-4	SJT3C#16	φ 8.2~9.2	15.9	14.0	0.8~1.6	17.8	15.0	5.8		
6P3-4	SJT3C#16				1.9~3.2				17.3	14.8
7N-2	SJT3C#14	φ 9.2~10.5	19.0	16.5	0.8~1.6	21.5	19.1	7.8	100	
7P-2	SJT3C#14	φ 11.0	19.8		1.9~3.2					21.7

# Adjustment Part - STRAIN RELIEF BUSHING

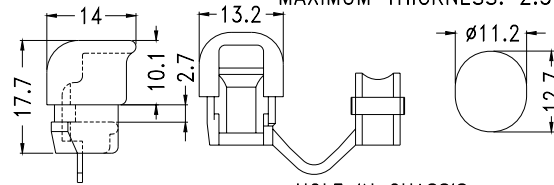
Hankook Fastener



HOLE IN CHASSIS  
WIRE ACCOMODATED: SPT-2(3x6.6)  
MAXIMUM THICKNESS: 2.5

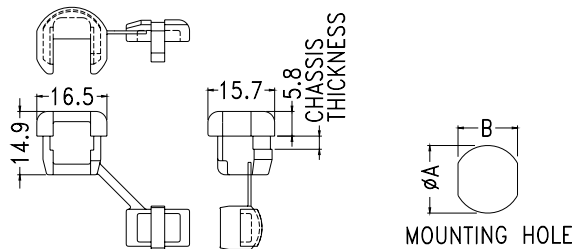
- ◆ MATERIAL: NYLON 66(UL)
- ◆ FLAME CLASS :94V-2
- ◆ COLOR:BLACK
- ◆ UNIT:mm

PART NO	PACKAGE
SB4L-4	500

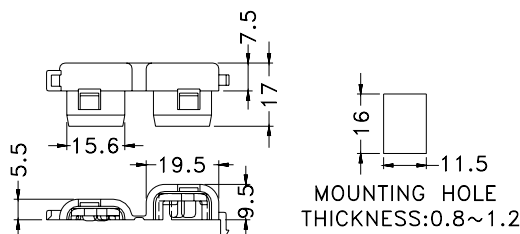


HOLE IN CHASSIS  
WIRE ACCOMODATED: SV(φ6.0)  
MAXIMUM THICKNESS: 2.5

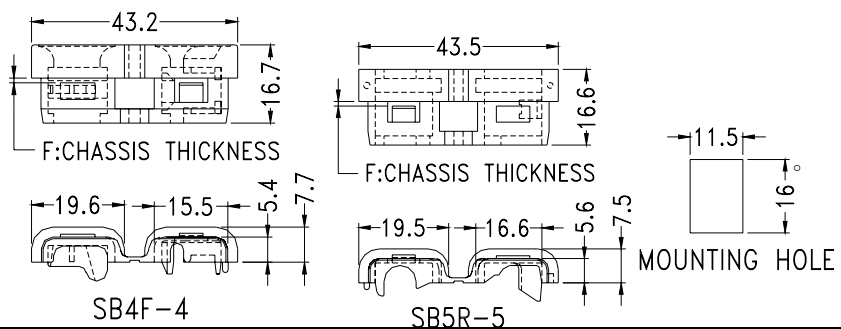
PART NO	PACKAGE
SB5L-4	500



PART NO	WILL FIT THESE CABLE			CHASSIS DIMENSION		CHASSIS THICKNESS	PACKAGE
	UL TYPE DESIGNATION	AWG CONDUCTORS	APPROXIMATE SIZE	A	B	適用板厚	
SB6P4-4	SPT-2	18/3	3.0X7.6	15.9	14.0	2~2.5	500
		16/3	4.1X10.4				



PART NO	WILL FIT THESE CABLE		PACKAGE
	UL/CSA DESCRIPTION	SIZE	
SB4F-6	SPT-1,SPT-2	3X5.6, 3.71X7.6	200

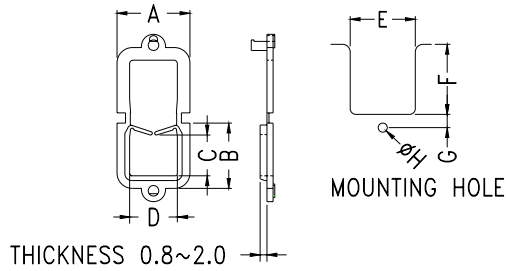


PART NO	WILL FIT THESE CABLE		CHASSIS THICKNESS	PACKAGE
	UL/CSA DESCRIPTION	SIZE	F	
SB4F-4	SPT-1,SPT-2	3X5.6, 3.71X7.6	0.8~1.2	250
SB5R-5	SVT3C#18	φ 6.6~7.2	0.8~1.2	

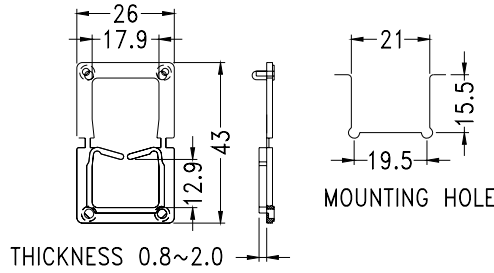
# Adjustment Part - SNAP BUSHING

Hankook Fastener

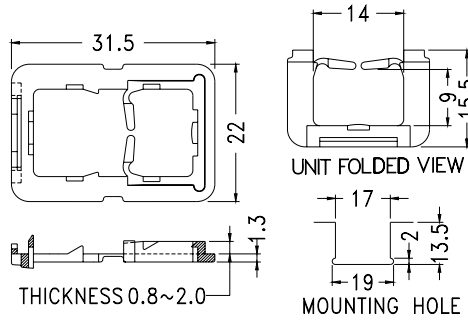
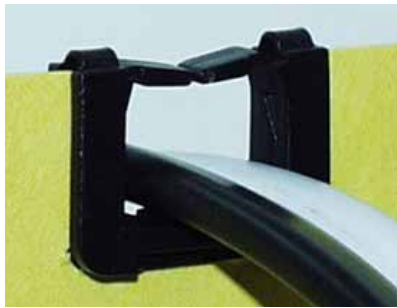
- ◆ MATERIAL: NYLON 66(UL)
- ◆ FLAME CLASS :94V-2
- ◆ COLOR:BLACK
- ◆ UNIT:mm



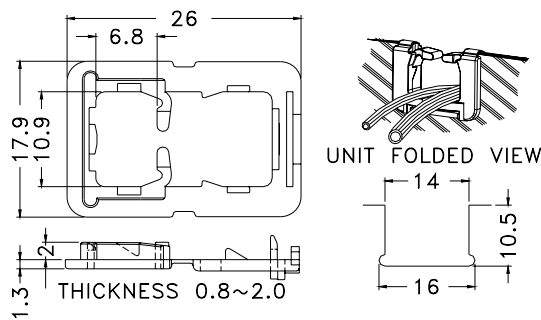
PART NO	A	B	C	D	E	F	G	H	PACKAGE
SQB-1	18.4	14.5	8.9	11.0	14.0	12.3	2.7	2.7	500
SQB-2	21.5	18.8	11.9	13.9	17.2	18.5	3.5	3.0	



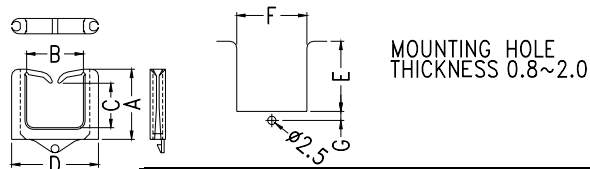
PART NO	PACKAGE
SQB-3	500



PART NO	PACKAGE
SQB-4	500



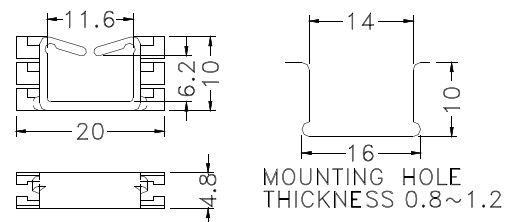
PART NO	PACKAGE
SQB-5	100



PART NO	A	B	C	D	E	F	G	PACKAGE
SQE-1	12.1	11.5	7.3	19.8	12.3	14.0	2.8	1000
SQE-2	21.0	17.0	14.0	26.0	21.0	21.0	2.7	500
SQE-3	28.8	22.7	22.4	33.2	29.0	27.0	2.8	



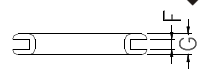
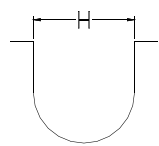
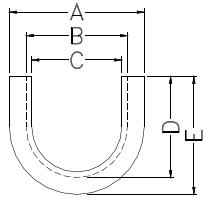
PART NO	PACKAGE
SQF-1	500



# Adjustment Part - SNAP BUSHING

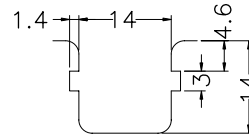
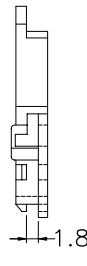
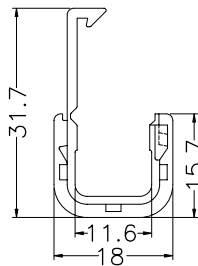
Hankook Fastener

- ◆ MATERIAL: NYLON 66(UL)
- ◆ FLAME CLASS :94V-2
- ◆ COLOR:BLACK
- ◆ UNIT:mm



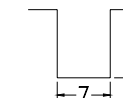
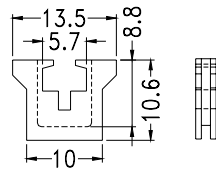
MOUNTING HOLE  
THICKNESS 1.7~1.8

PART NO	A	B	C	D	E	F	G	H	PACKAGE
SQH-1	24.0	18.0	16.0	18.0	21.0	1.8	3.7	18.0	1000
SQH-2	24.3	19.3	17.5	24.5	27.0	1.9	3.9	19.3	



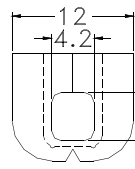
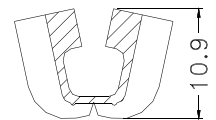
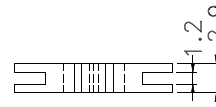
MOUNTING HOLE  
THICKNESS 0.8~2.0

PART NO	PACKAGE
SQI-1	1000



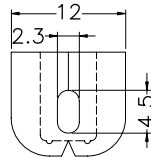
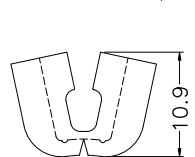
MOUNTING HOLE  
THICKNESS 0.8~2.0

PART NO	PACKAGE
SQD-1	1000



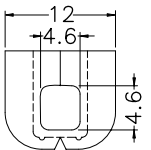
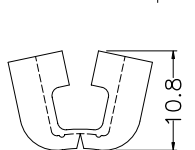
MOUNTING HOLE  
THICKNESS 0.8~1.0

PART NO	PACKAGE
SQG-1	1000



MOUNTING HOLE  
THICKNESS 0.8~1.0

PART NO	PACKAGE
SQG-3	1000



MOUNTING HOLE  
THICKNESS 0.8~1.0

PART NO	PACKAGE
SQG-4	1000